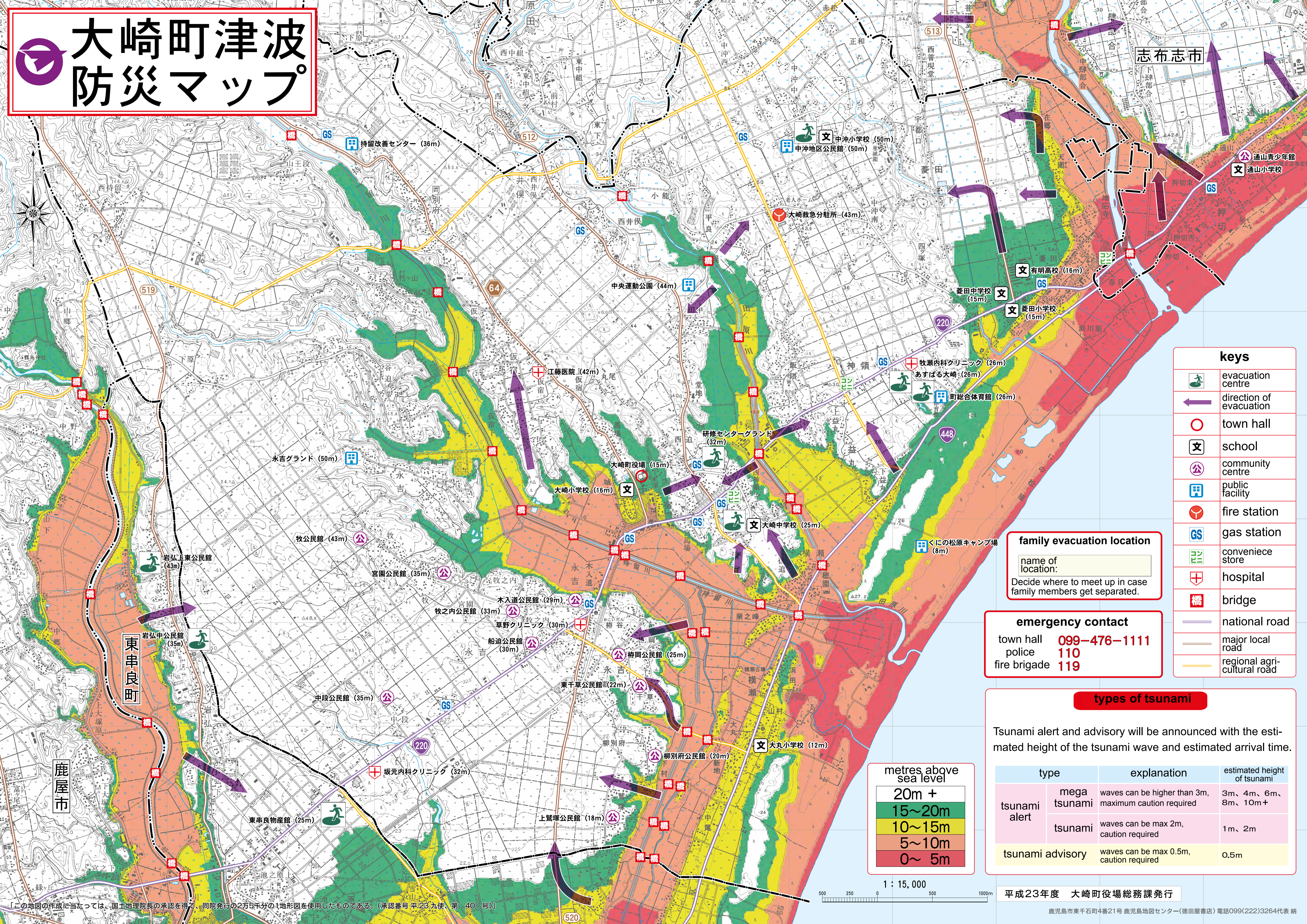


大崎町津波 防災マップ



keys

	evacuation centre
	direction of evacuation
	town hall
	school
	community centre
	public facility
	fire station
	gas station
	convenience store
	hospital
	bridge
	national road
	major local road
	regional agricultural road

family evacuation location

name of location:

Decide where to meet up in case family members get separated.

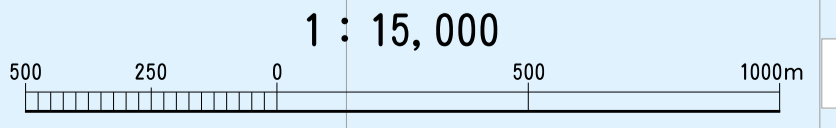
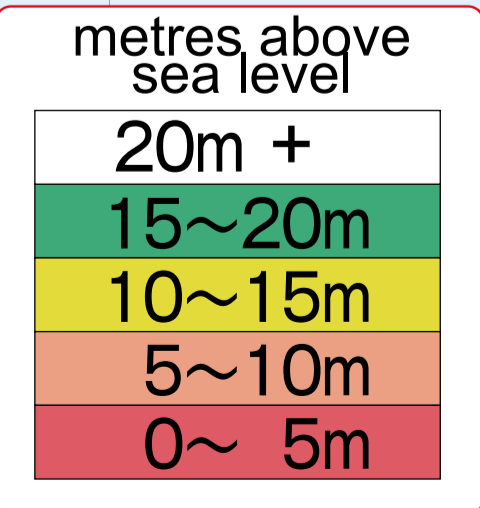
emergency contact

town hall **099-476-1111**
 police **110**
 fire brigade **119**

types of tsunami

Tsunami alert and advisory will be announced with the estimated height of the tsunami wave and estimated arrival time.

	type	explanation	estimated height of tsunami
tsunami alert	mega tsunami	waves can be higher than 3m, maximum caution required	3m、4m、6m、8m、10m+
	tsunami	waves can be max 2m, caution required	1m、2m
tsunami advisory		waves can be max 0.5m, caution required	0.5m



【この地図の作成に当たっては、国土地理院長の承認を得て、同院発行の2万5千分の1地形図を使用したものである。(承認番号平23九使、第40号)】